

ReDat

Recording

ReDat MIC-4CH Box

A special hardware device designed to support the recording of microphones monitoring communications in the area of the dispatcher's workplace or directly at the dispatcher/agent desk.



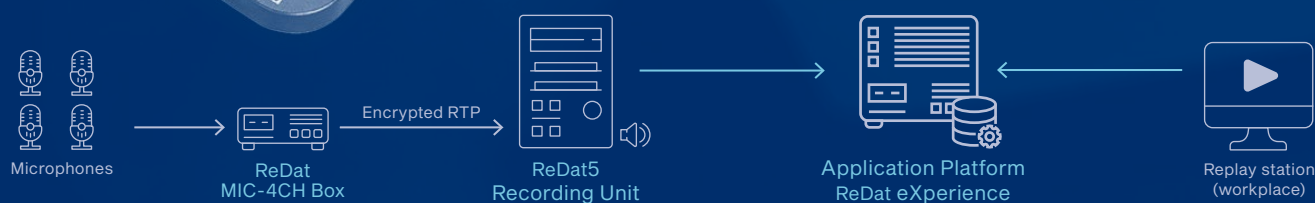
MICROPHONE RECORDING

The ReDat MIC-4CH Box is used to record surround microphones on ReDat Recorder and ReDat5 recording devices.

Recordings from surround microphones can serve as a supplement to recordings from other technologies, such as telephone and radio communication lines, control terminal screens and other data sources.

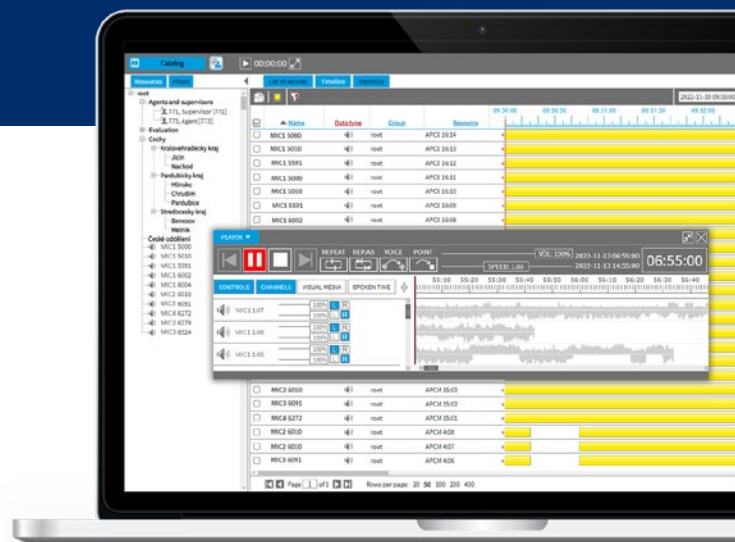


The ReDat MIC-4CH Box is equipped with four XLR-type connectors with the ability to supply 48 V power for condenser-type microphones (phantom power). So it records up to four microphones simultaneously. The recording mode is either continuous or switched when the set level of voice activity is reached. The extent of the recorded space can be influenced by a combination of the set level on the desired input and the directional characteristics of the microphone used.



PLAYBACK

Recordings from microphones can be reproduced, for example, using the ReDat eXperience application platform either independently or time-synchronously with other types of data (eg: audio from telephone or radio communication devices, video recordings of workstation screens, text data of datalink recordings, etc.).



ReDat MIC-4CH BOX	
Audio	A-law 128kbit/s (16kHz) 4xXLR connector for connecting a microphone (phantom power 48V)
Network interface	RJ45 Ethernet 10/100/1000Mbit/s (IPv4/IPv6)
Dimensions	height: 45mm, width: 130mm, depth: 130mm, weight: 0.7 kg
Power supply	PoE dle IEEE 802.3af (44-57V) Imax<200mA, P<10W
Environment	Operating temperature 0°C to +40°C Storage temperature -10°C to +60°C

KEY FEATURES

- TCP/IP and SRTP protocol support.
- Optical status indication.
- Firmware and configuration stored on a microSD card (update by simply changing the card).

ReDat Recording Systems provides a sophisticated system for recording voice, screen and other relevant data. The system automatically analyzes the data to make it available to system users in a clear and structured way.